



## EDGE LIT



PRICE

Milliken™



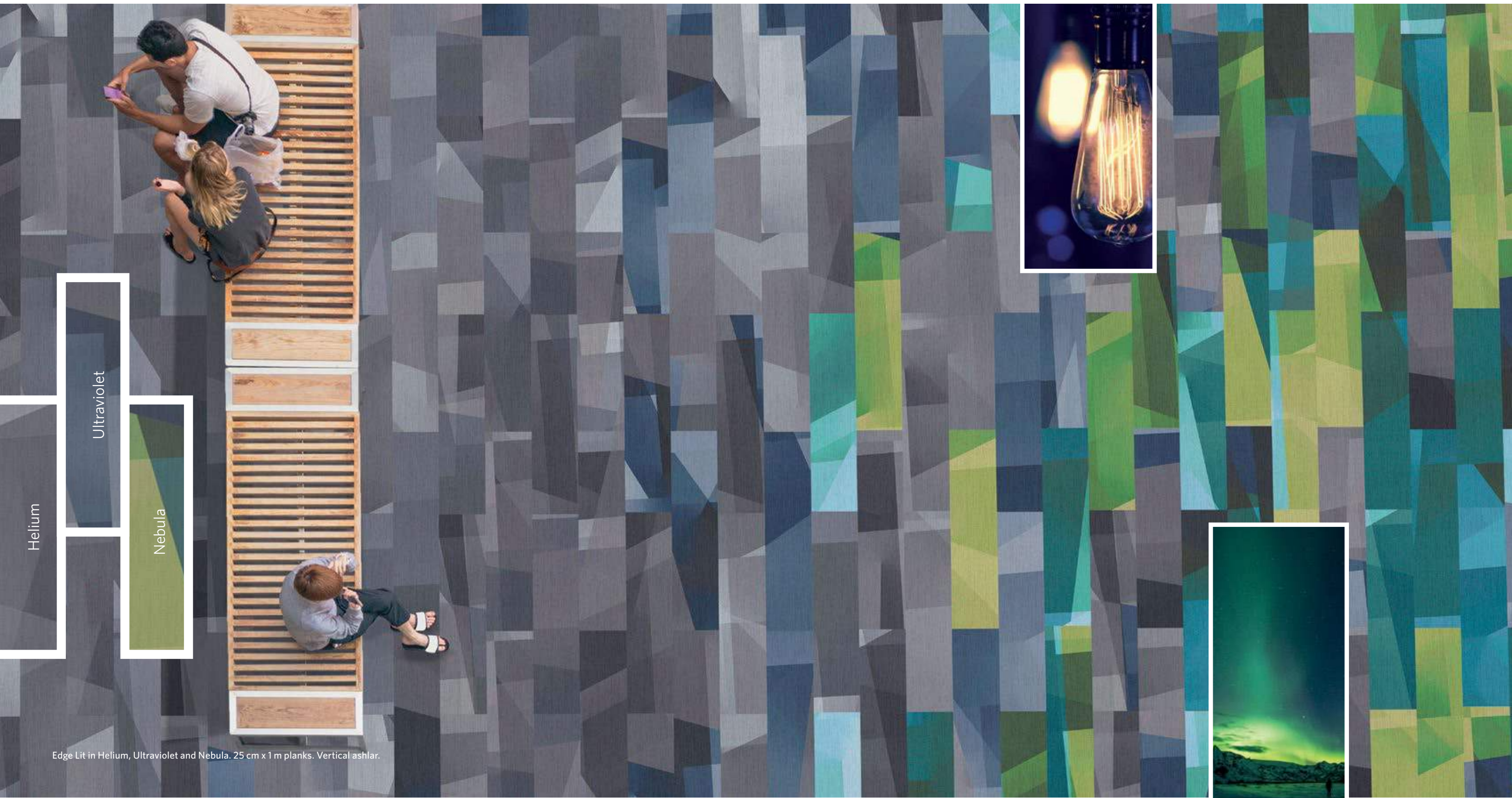
# EDGE LIT

Whether a prism transforming sunlight into a splendid rush of color or a black light exposing points of the spectrum that we cannot perceive on our own, light transforms spaces and designates energy. A new carpet collection offered in 12 radiant colors from rich neutrals to bold brights available in 25 cm x 1 m planks, 1 m x 1 m tiles and a modular inset rug, Edge Lit delves into the astounding nature of light.

Modular inset rug, Edge Lit in Infrared. Random rug border, Edge Lit in Fluorescent, 25 cm x 1 m.  
Field, Edge Lit in Argon, 1 m x 1 m tiles, vertical ashlar.



25CM X 1M PLANKS



Edge Lit in Helium, Ultraviolet and Nebula. 25 cm x 1 m planks. Vertical ashlar.





Edge Lit in Incandescent and Carbon. 25 cm x 1 m planks. Vertical ashlar.







1 M X 1 M TILES



Edge Lit in Fluorescent and Black Light. 1 m x 1 m tiles. Monolithic.





Edge Lit in Helium (left) and Mercury. 1 m x 1 m tiles. Vertical ashlar.





Edge Lit in Atmosphere (Conference room) and Helium. 1 m x 1 m tiles. Vertical ashlar.





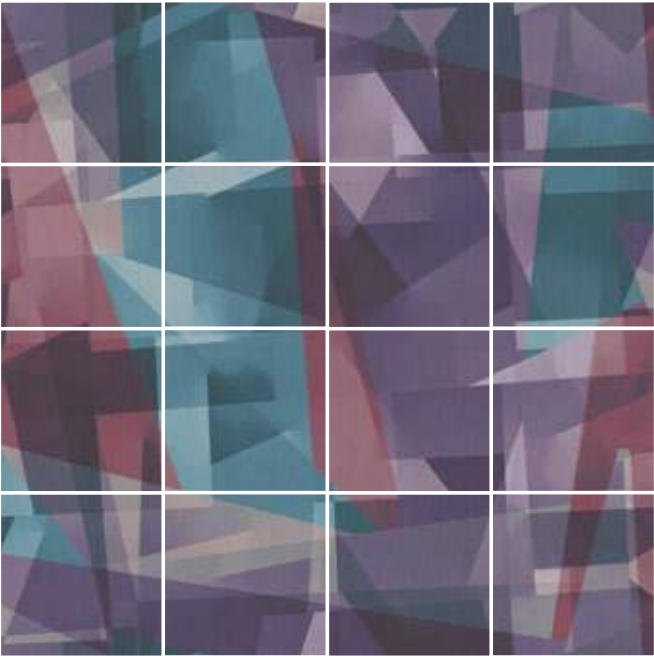
# MODULAR INSET RUGS

Experience the Milliken difference with our modular inset rugs. Perfect for large public spaces, these rugs make it easier than ever to create a beautiful floorscape without excess waste.





# CREATE A SPOTLIGHT



## MODULAR INSET RUG

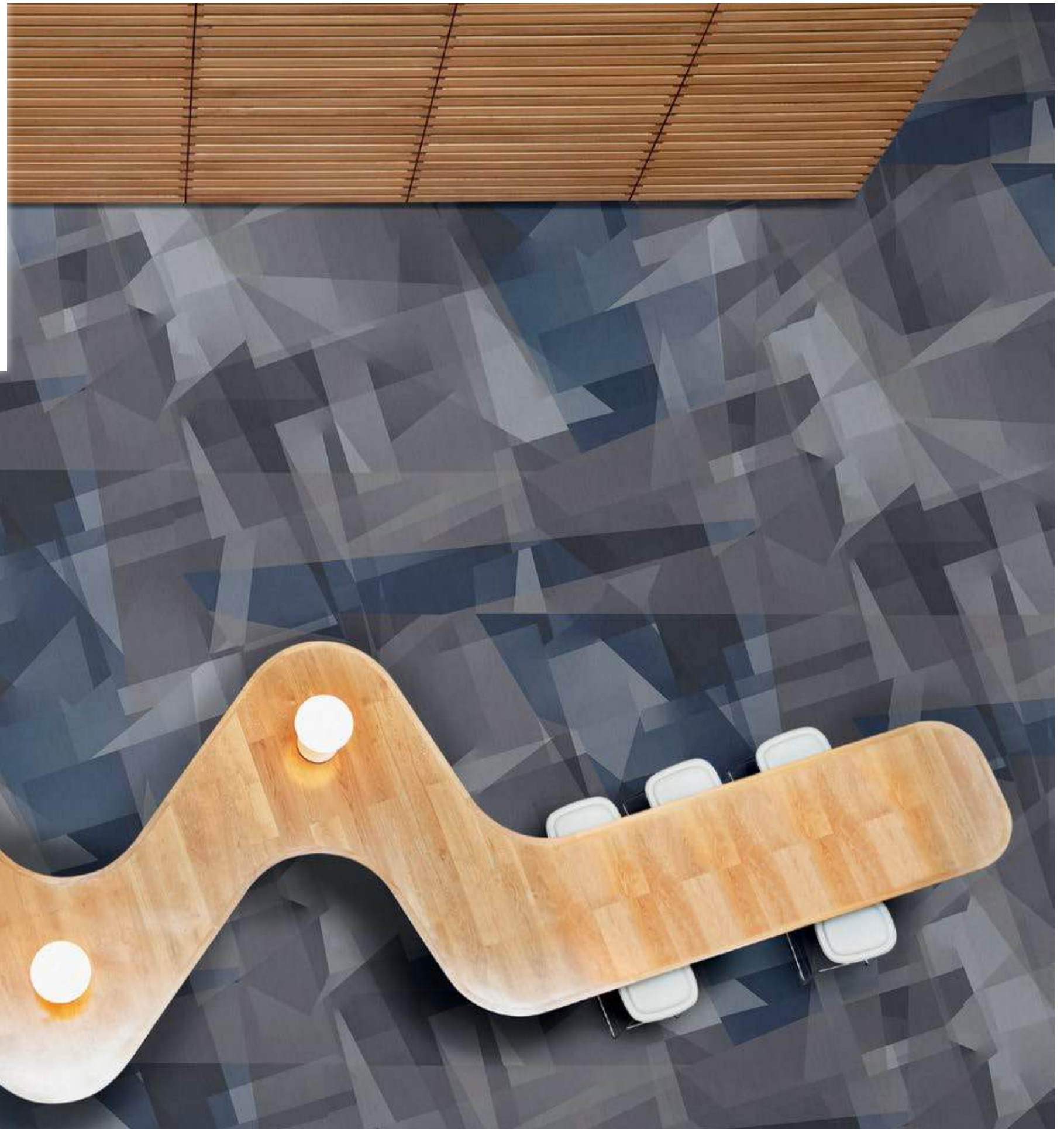
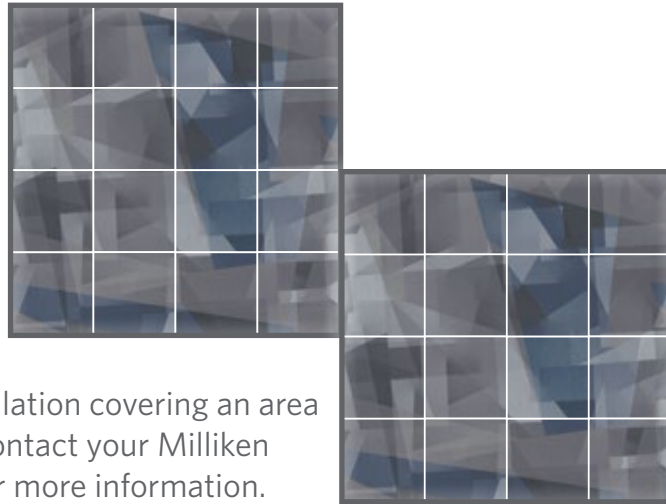
This 16-tile repeat creates the look of a dramatic area rug, 4 m x 4 m, perfect for large public spaces. Each tile is labeled 1 through 16 and marked with directional arrows to ensure correct placement. An installation diagram is also provided with your order.

Edge Lit in Aurora (modular inset rug, 1 m x 1 m tiles, monolithic) and Mercury (field, 25 cm x 1 m planks, vertical ashlar).



## LIGHT UP THE ROOM

Our unique modular inset rug comes in a set repeat of 4 m x 4 m but can easily be adjusted to a larger size by adding full repeats. The rug design can be extended using the half drop method to create a seamless installation covering an area as large as you need. Contact your Milliken Sales Representative for more information.



Edge Lit modular inset rug in Ultraviolet.





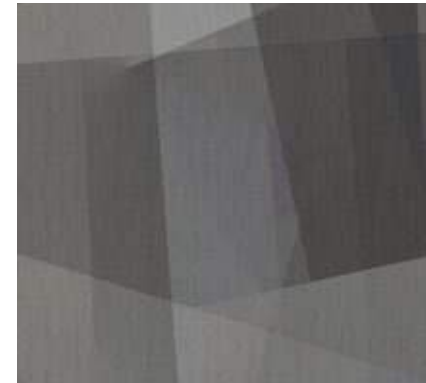
## ILLUMINATE YOUR OWN FLOORSCAPE

Just as there are different light sources and types, Edge Lit planks contain their own variation of luminosity. This color variation allows you to create unique floorscapes with more interest and less repetition. For the complete range of variation within Edge Lit, contact your representative for more information or visualize now at [millikenfloors.com](http://millikenfloors.com).

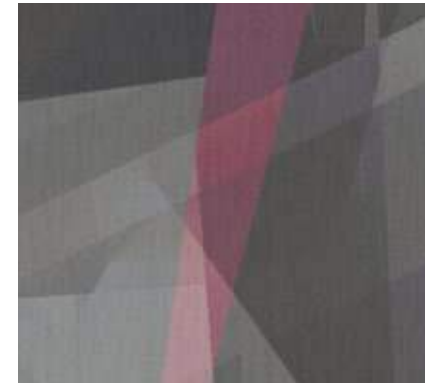


Shown above: Color variation within Fluorescent planks.

**COLOR LINE** Available in 1 m x 1 m tiles and 25 cm x 1 m planks



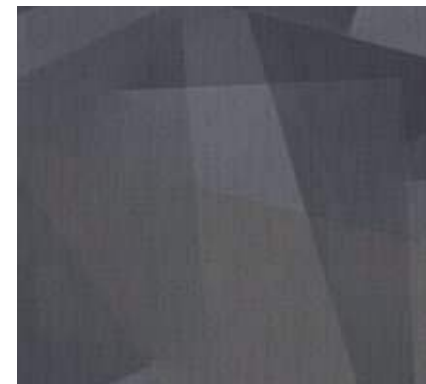
EDG259-120 ARGON



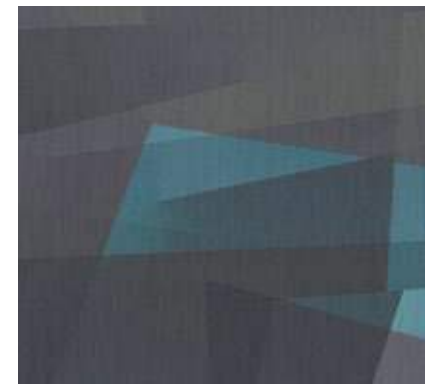
EDG120-168 FLUORESCENT



EDG231-60-168 INFRARED



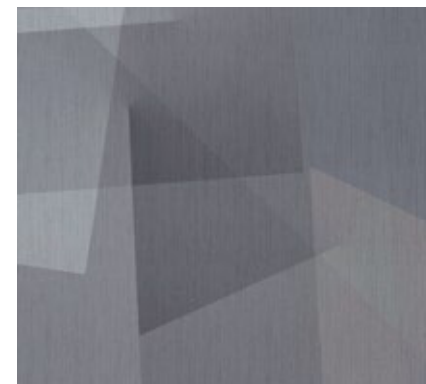
EDG107-133 MERCURY



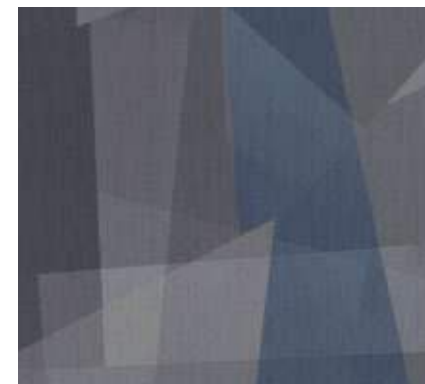
EDG133-229 BLACK LIGHT



EDG229-148-232 AURORA



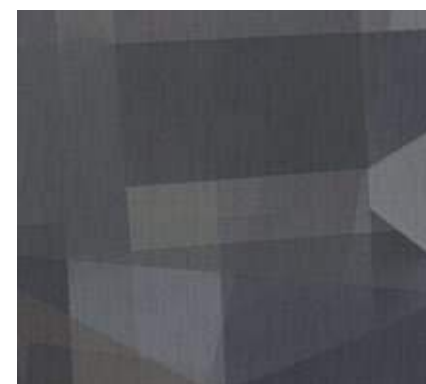
EDG154-138 HELIUM



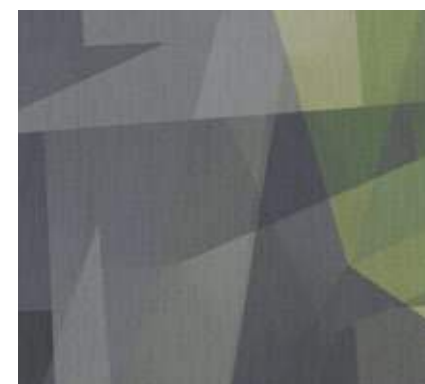
EDG138-249 ULTRAVIOLET



EDG249-202-198 NEBULA



EDG59-118 CARBON



EDG118-141 INCANDESCENT



EDG141-201-65 ATMOSPHERE



# STYLE BACKED BY PERFORMANCE

Milliken Floor Covering offers products and expertise in all areas of your commercial spaces, including high-performance entryway systems, modular and broadloom carpet, luxury vinyl tile and milliCare®. Simplify your flooring projects by working with a trusted partner that lets you focus on enjoying the process of creating a great space.

Edge Lit in Incandescent. 1 m x 1 m tiles.  
Ashlar.

Milliken™

## Complete Performance and Support

### ENTRYWAY SYSTEMS

Great architecture and design aren't just about managing all that goes into an effective, attractive space. It's also about what's intentionally kept out. That's why the protective flooring experts at Milliken created OBEX™, a comprehensive entrance system with a range of proven forms and materials. OBEX equips architects, engineers and specifiers with all they need to create site-specific, high-performing entries, without compromising their project's overall design.

### MODULAR CARPET AND BROADLOOM

Milliken's broadloom and carpet tile incorporate the latest innovations in tufting and dyeing technology, achieving unique looks and excellent performance. All carpet tile products have cushion backing for an extended lifespan, as well as ergonomic and environmental benefits.

### LUXURY VINYL TILE

From natural looks of wood and stone to more modern textures and abstracts, Milliken's collection of Luxury Vinyl Tile flooring creates new options for a commercial or hospitality interior. Our simple-to-search Color Reference system provides easy coordination of the LVT options to modular and broadloom carpets.

### MILLCARE®

milliCare takes caring for your flooring and textiles off your to-do list, which means you can skip right to the part where you get to lean back, put your hands behind your head, and be a hero for keeping a beautifully cleaned space.



### WARRANTY

Our products are backed by lifetime commercial warranties that ensure quality and give peace of mind. Milliken stands behind its products in the areas of Face Fiber Wear, Staining/Soiling Resistance, Color Pattern Permanency, Delamination of Backing, Edge Ravel, Tuft Bind, Floor Compatibility, Antistatic, Flammability, Cushion Resiliency, Dimensional Stability, Floor Release, TractionBack and Moisture Resistance.  
» [millikenfloors.com/warranty](https://millikenfloors.com/warranty)



### SUSTAINABILITY

Core to our culture, we embrace sustainability with practices such as third party voluntary product labeling and certifications, zero waste to landfill since 1992, use of renewable energy, product life cycle assessments, ISO 9000 quality standards and all of our manufacturing sites are certified to the highest global environmental standard - ISO 14001 certified.  
» [millikenfloors.com/sustainability](https://millikenfloors.com/sustainability)



### STAINSMART®

StainSmart, a proprietary treatment applied to Milliken carpets designed to repel and protect against stains and enhance soil release.  
» [millikenfloors.com/stainSMART](https://millikenfloors.com/stainSMART)



### MOISTURE MANAGEMENT

Milliken modular carpet is a moisture mitigation solution all by itself. Unlike with hardback products, water vapor has a way to escape from beneath Milliken's cushion backing. It travels freely through our open-cell cushion, evaporating naturally through seams at the edges of each carpet tile. All modular carpet tiles come with a lifetime warranty against adhesive breakdown due to moisture vapor emissions.  
» [millikenfloors.com/moisture](https://millikenfloors.com/moisture)



### WELLBAC™ CUSHION

WellBAC™ cushion provides superior underfoot comfort while improving the carpet's durability and offering ergonomic, acoustic and environmental benefits.  
» [millikenfloors.com/cushion](https://millikenfloors.com/cushion)



### SIT TO STAND

Avoid the hassle and expense of using anti-fatigue mats under sit-to-stand workstations. Milliken cushion backed carpet tiles have ergonomics built directly into the carpet tiles themselves.  
» [millikenfloors.com/sit2stand](https://millikenfloors.com/sit2stand)



### TRACTIONBACK®

Our bio-based, high-friction coating keeps carpet tiles securely in-place without additional adhesives, eliminating the need to prime or seal the floor, thereby reducing installation time and costs.  
» [millikenfloors.com/tractionback](https://millikenfloors.com/tractionback)



# EDGE LIT



## SUSTAINABLE FEATURES OF THIS PRODUCT

**Edge Lit** is manufactured with WellBAC™ Comfort cushion backing, and is certified NSF-140 Gold with 39.3% pre-consumer recycled content by total product weight. **Edge Lit** is also available with our NSF-140 Platinum backing option. All Milliken modular carpets carry Environmental Product Declarations and Health Product Declarations, which contribute to LEED certification. Additionally, Milliken modular carpets carry Declare® transparency labels and comply with the Red List Imperative of the Living Building Challenge™.

### Construction

Tufted, Textured Loop

### Tile Sizes

25 cm x 1 m (9.85" x 39.4")  
1 m x 1 m (39.4" x 39.4")

### Yarn Type

100% Milliken-Certified WearOn®  
Nylon Type 6,6

### Stain Repel & Resist / Soil Release

StainSmart®

### Tufted Face Weight

15 oz/yd² (509 g/m²)

### Finished Pile Height

0.13" (3.3 mm)

### Finished Pile Thickness

0.08" (2.03 mm)

### Average Density

6,541

### Standard Backing

PVC-Free WellBAC™ Comfort  
Cushion  
Available with TractionBack®

### Texture Appearance Retention Rating (TARR)

Severe

## Recommended Installation Methods



MONOLITHIC



ASHLAR



V. ASHLAR



ALL PLANK  
METHODS

### TractionBack®

Simplify your modular installation with Milliken's patented TractionBack®, an innovative backing system that is faster, more cost efficient, and environmentally superior to wet adhesives and peel-and-stick carpet tile.



## Growing greener for over 100 years.

This product has a UL® Environment 3<sup>rd</sup> party verified Environmental Product Declaration (EPD). A copy of the EPD is available online at [millikencarpet.com/epd](http://millikencarpet.com/epd) and [productguide.ulenvironment.com](http://productguide.ulenvironment.com).

This WellBAC™ cushion carpet tile product is covered by one or more patents, published applications and/or patents pending. Specifications are subject to normal manufacturing tolerances and may be changed without prior notice. Images in this brochure are approximate for color and pattern scale. Please use actual carpet samples to make your final selections.