



## **FREELAY LVT**

Eero / Fargesia Bamboo

Heritage Wood / Polished Concrete

PowerGrid



Milliken™



## INSPIRED. INSPIRING.

Balance soft and hard surfaces with coordinating Milliken Luxury Vinyl Tile. Mirror the distressed aesthetics of Eero from the Freelay collection, or inject subtly with Polished Concrete, Fargesia Bamboo, PowerGrid, and Heritage Wood.

Freelay is available in various patterns and sizes, for exponential design possibilities.



Formwork in Azul (*left*) with Eero in EER108-215-209 (*right*), ashlar tile installation

## MILLIKEN FREELAY LVT

The Freelay LVT Collection brings the additional benefits of new aesthetics, installation options, and improved comfort and acoustics to Milliken's Luxury Vinyl Tile offering. From natural looks of wood and manmade stone to more modern woven textures and abstract patterning, Freelay creates new options for pattern scale and quality flooring installation in a commercial or hospitality interior. Our simple-to-search Color Reference system provides easy coordination of all of original and new Freelay LVT options to modular and broadloom carpets. From carpet tile to broadloom to planks to LVT, Milliken provides durable and elegant options for your project.





Fargesia Bamboo in FAR217, vertical ashlar tile installation



PowerGrid in PWG97, ashlar tile installation





Get more at [millikenfloors.com](https://millikenfloors.com)

Eero in EER79-145-120 (left) with Mangrove in Cove (right), vertical ashlar tile installation





Polished Concrete in POL13 with Intersection in Backlight, ashlar tile installation





EER108-215-209



EER25-144-208



EER79-145-120



EER79-13

TILE SIZE  
9" x 59.72"  
PIECES/CARTON  
6



Eero in EER108-215-209, vertical ashlar tile installation



Fargesia Bamboo



FAR76



FAR18



FAR79



FAR217

TILE SIZE  
9" x 59.72"  
PIECES/CARTON  
6

FARGESIA BAMBOO



Fargesia Bamboo in FAR76, herringbone tile installation



Heritage Wood



HER145



HER76



HER218



HER208

TILE SIZE  
9" x 59.72"  
PIECES/CARTON  
6



HERITAGE WOOD

Heritage Wood in HER145, vertical ashlar tile installation



Polished Concrete



POL55



POL67



POL13



POL144

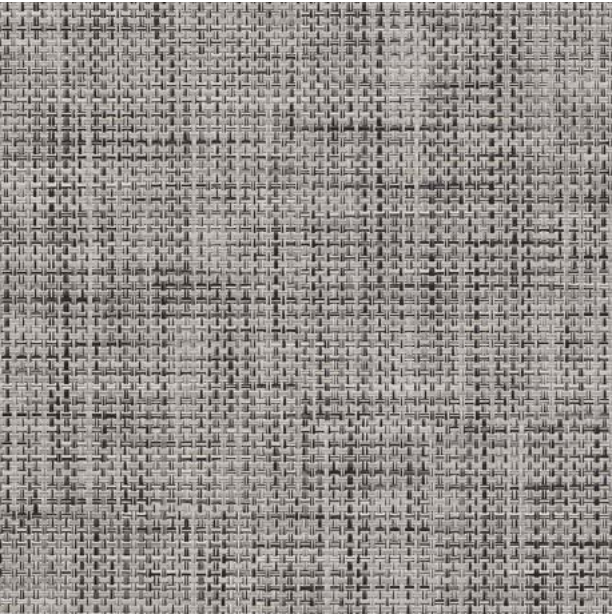
TILE SIZE  
36" x 36"  
PIECES/CARTON  
4

POLISHED CONCRETE



Polished Concrete in POL67 (*field*) with Sea Grape in Cove (*insets*), ashlar tile installation





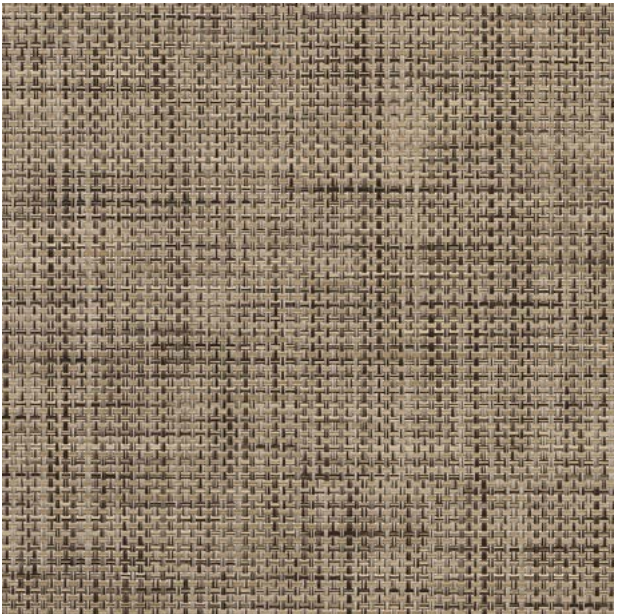
PWG171



PWG97



PWG22



PWG15

TILE SIZE  
36" x 36"  
PIECES/CARTON  
4



PowerGrid in PWG171, ashlar tile installation



# Milliken Freelay LVT Construction

1.

ADÁMAS™ POLYURETHANE COATING

Provides excellent stain and abrasion resistance, eliminates the need for wax, polishes and harsh chemicals—reduced maintenance costs and improved IAQ
2.

TRANSPARENT WEAR LAYER

Hard wearing, provides long lasting appearance retention in heavy commercial traffic environments
3.

PRINTED LAYER

This layer utilizes high definition print film for stunning, eye-perfect, authentic visuals
4.

CORE LAYER

High performance layer that provides extra stability and durability
5.

GLASS FIBER LAYER

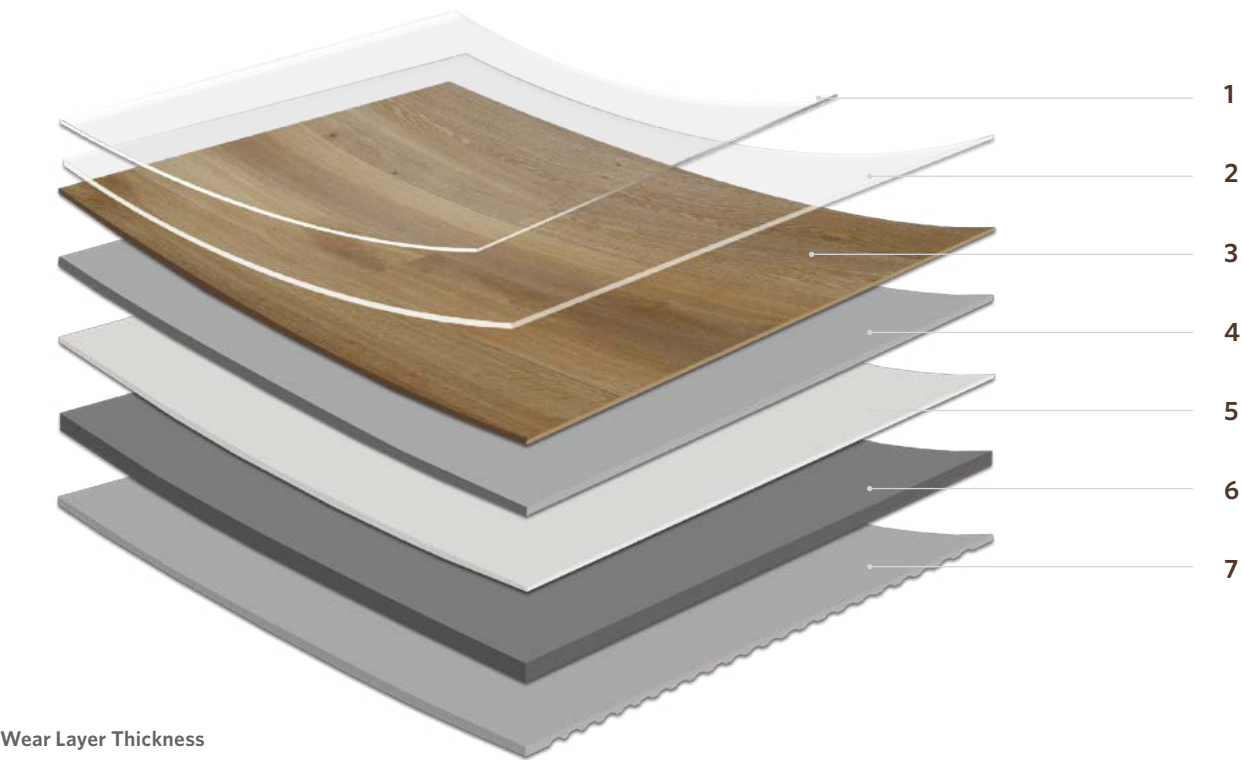
Minimizes expansion and contraction under extreme temperatures
6.

BACKING LAYER

High vinyl content backing layer provides robust foundation and impact resistance
7.

NON-SKID BACKING

Allows adhesive free installation and replacement



**Wear Layer Thickness**  
28 mil (0.7 mm)

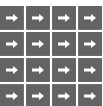
**Overall Thickness**  
.197" (5 mm)

## Shipping Information

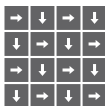
COLLECTION	DESIGN NAME	TILE SIZE	PC./BOX	FT²/BOX	WT./BOX
Freelay	Eero	9" x 59.72"	6	22.4	46.14 lb
Freelay	Fargesia Bamboo	9" x 59.72"	6	22.4	46.14 lb
Freelay	Heritage Wood	9" x 59.72"	6	22.4	46.14 lb
Freelay	Polished Concrete	36" x 36"	4	36	74.16 lb
Freelay	PowerGrid	36" x 36"	4	36	74.16 lb

## Installation Methods

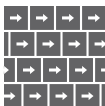
36" x 36"



Monolithic



Quarter Turn

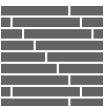


Brick Ashlar

Planks



Herringbone



Traditional



Milliken LVT meets many environmental standards, including:

- 100% REACH Compliant
- FloorScore® certified
- Declare ingredient label
- Third Party Certified EPD

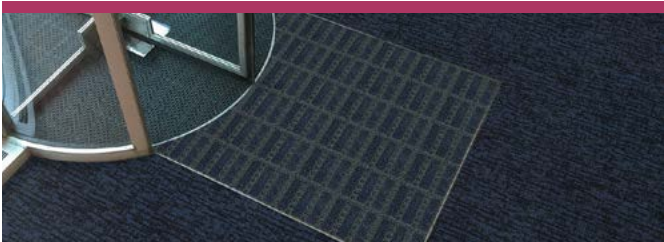
Milliken LVT is highly durable resilient flooring engineered with the highest quality raw materials to provide unsurpassed performance and enduring aesthetics. Milliken LVT is 100% phthalate free utilizing bio-based plasticizers derived from soya bean oil as the phthalate alternative. All production waste is granulated and recycled into backing production to create an internal closed loop recycling process. Milliken LVT is manufactured at facilities that are ISO 9001 and ISO 14001 compliant.



# Complete Flooring Solutions



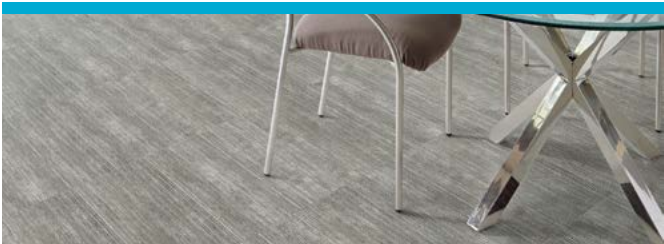
Milliken Floor Covering offers products and expertise in all areas of your commercial spaces, including high-performance entryway systems, broadloom & modular carpet, luxury vinyl tile, and milliCare®. Simplify your flooring needs with a trusted partner that will let you enjoy creating a great space without having to worry about everything else.



## Entry Systems

The OBEX® brand of products offers highly effective, comprehensive modular entry solutions designed as a three-zone barrier system to prevent dirt and moisture from entering the building.

Available in coordinated colors and patterns, OBEX® entry products are engineered to increase the functionality of a building's entrance without forsaking elements of design or aesthetic. Simple and easy to work with, OBEX® offers entry systems that can be recessed or surface-mounted as well as exterior and interior applications.



## Luxury Vinyl Tile

From natural looks of wood and stone to more modern textures and abstracts, Milliken's collection of Luxury Vinyl Tile flooring creates new options for a commercial or hospitality interior. Our simple-to-search Color Reference system provides easy coordination of the LVT options to modular and broadloom carpets. From carpet tile to broadloom to planks to LVT, Milliken provides durable and elegant options for your project.



## Broadloom & Modular Carpet

Milliken's broadloom and carpet tile incorporate the latest innovations in tufting and dyeing technology, achieving unique looks and excellent performance. With our Color Reference system, coordinating multiple products across a single project is a snap; whether it's carpet, LVT, or entry systems. All carpet tile products have cushion backing for an extended lifespan, as well as ergonomic and environmental benefits. Broadloom carpet also has cushion-back options, and all are standard with StainSmart®, a proprietary treatment applied to Milliken carpets to repel and protect against stains and enhance soil release.



## milliCare®

We care for the environment with products and a method that improve Indoor Air Quality and reduce water consumption and your carbon footprint. We care about you professionally by saving you time through customized service plans for your entire space provided for by our franchise network. You work healthier and live healthier, and the planet is a better place because of it. We can bring that same quality of care and service to you wherever you are. milliCare takes caring for your flooring and textiles off your to-do list, which means that you get to skip right to the part where you get to lean back, put your hands behind your head, and be a hero for keeping a beautifully cleaned space.



# FREELAY LVT

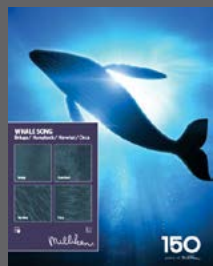
Eero / Fargesia Bamboo / Heritage Wood  
Polished Concrete / PowerGrid

Images in this brochure are approximate for color and pattern scale. Please use actual product samples to make your final selections.

Have you seen our other collections? Visit us online today.



LVT - Abstract, Stone, Wood



Whale Song



## Construction

High Performance Luxury Vinyl Tile

## Finish

Adámas™ UV-Cured Polyurethane

## Wear Layer Thickness

28 mil (0.7 mm)

## Overall Thickness

0.197" (5.0 mm)

## Edge Profile

Micro Bevel

## Critical Radiant Flux (ASTM E648)

Pass - Class I

## Smoke Density (ASTM E662)

Pass - ≤ 450

## Flexibility (ASTM F137)

Pass

## Heat Stability by Color Change (ASTM F1514)

Pass

## Light Stability (ASTM F1515)

Pass

## Static Coefficient of Friction (ASTM D2047)

Pass

## ASTM E90 on 6" Concrete Slab with Drop Ceiling

STC 64

## ASTM E492 on 6" Concrete Slab with Drop Ceiling

IIC 58

## Dimensional Stability (ASTM F2199)

Pass

## Resistance to Chemicals (ASTM F925)

Pass

## Static Load Limit (ASTM F970)

Pass

## Installation

Free Lay with perimeter glue

## Warranty

12 Year Limited Commercial Wear Warranty



## Growing greener for over 100 years.

This product has a UL® Environment 3<sup>rd</sup> party verified Environmental Product Declaration (EPD). A copy of the EPD is available online at [millikencarpet.com/epd](http://millikencarpet.com/epd) and [productguide.ulenvironment.com](http://productguide.ulenvironment.com).

Customer Concierge 800.824.2246 | [millikenfloors.com](http://millikenfloors.com)  
© 2016 Milliken & Company | Design © Milliken & Company

Cover image: *Stack of wooden bars*, by Pincasso.  
© 2016 Shutterstock

2710027546  
CP 0517